

Enterprise 1300

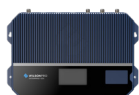
SKU: 460149

FEATURES

- Three outdoor antenna ports to target multiple carrier towers.
- Wired or LTE WilsonPro Cloud access for remote functionality.
- Up to 26 dBm in uplink power and 17 dBm in downlink power.
- XDR technology to virtually eliminate shutdown or signal loss.
- 4.3-inch LCD touchscreen for an enhanced user-experience.
- Works with ALL phones and cellular devices on ALL carriers.

* **WARNING:** Cancer and Reproductive Harm - www.P65Warnings.ca.gov.

Kit Includes



Enterprise 1300
or Enterprise 1300R
Amplifier



Outside
Directional Antenna
(314411)



Inside Dome
Antenna
(304412)



Lightning Surge
Protector
(859902)



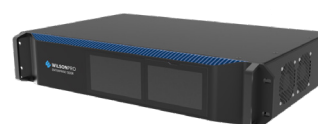
2 ft. Wilson400
Cable
(952402)



100ft Low-Loss
Wilson400 Cable x2
(952300)



RACK MOUNT OPTION:



**Enterprise
1300R**
SKU: 460150

About

The WilsonPro **Enterprise 1300/1300R** is a commercial-grade, in-building cellular amplifier that represents the latest in cell signal boosting technology—including a revolutionary industry-first, three outdoor-antenna-port configuration. Depending on cell tower locations, using up to three outdoor antennas (each dedicated to a specific frequency band to collectively amplify signals from multiple towers) helps maximize coverage in commercial spaces up to 40,000 sq. ft.*

Based on user need or preference, the Enterprise 1300/1300R can also utilize “common mode” as a default; using only a single outdoor (donor) antenna and a single port to receive cell signal.

With wired or LTE access (using the built-in cellular modem) to the WilsonPro Cloud for remote functionality, the Enterprise 1300/1300R provides integrators and building managers with the capability to remotely manage, monitor, and adjust their amplifier, as well as receive real-time updates on a smartphone or tablet. Immediate notification of issues, such as system failure, oscillation, or change in signal strength is also provided via text or email.

The Enterprise 1300/1300R generates up to 26 dBm in uplink power—enabling it to reach towers at much greater distances. With up to 17 dBm in downlink power, it's also one of the most powerful amplifiers in its price range. The “R” model name signifies its rack-mount option.

This amplifier includes a 3-year manufacturer's warranty and a 30-day money-back guarantee.

*Depending on outside signal conditions.

Specifications

MODEL NUMBER	460149* • 460249* • 460549* 460150* • 460250* • 460550*	
FREQUENCIES	Band 12/17	700 MHz
	Band 13	700 MHz
	Band 5	850 MHz
	Band 4	1700/2100 MHz
	Band 25	1900 MHz
MAX GAIN	70 dB	
MAX UPLINK POWER	26 dBm	
MAX DOWNLINK POWER	17 dBm	
IMPEDANCE	50 Ohm	
POWER	120 V AC, 60 Hz, 60 W	
CONNECTORS	N-Female	
AMPLIFIER DIMENSIONS	19 x 12 x 2.5 • 17.5 x 12 x 3.75 in	
AMPLIFIER WEIGHT	16.515 lbs • 9.66 lbs	

Detailed Specifications

1300 / 1300R					
SKU	460149 / 460150				
Model Number	460149 / 460150				
FCC ID	PWO460049 / PWO460049 / PWO460050 / PWO460050				
Connectors	N-Connectors				
Antenna Impedance	50 Ohms				
Frequency	698-716 MHz, 729-746 MHz, 777-787 MHz, 824-894 MHz, 1850-1990 MHz, 1710-1755/2110-2155 MHz				
Power output for single cell phone (Uplink) dBm	700MHz Band12/17	700MHz Band13	800MHz	1700MHz	1900MHz
	23.9	23.9	25.1	23.7	26.7
Power output for single cell phone (Downlink) dBm	700MHz Band12/17	700MHz Band13	800MHz	2100MHz	1900MHz
	16.7	16.8	16.9	16.8	16.8
Noise Figure	5 dB nominal				
Isolation	> 90 dB				
Power Requirements	120V AC 0.5A				

Each Signal Booster is individually tested and factory set to ensure FCC compliance. The Signal Booster cannot be adjusted without factory reprogramming or disabling the hardware. The Signal Booster will amplify, but not alter incoming and outgoing signals in order to increase coverage of authorized frequency bands only. If the Signal Booster is not in use for five minutes, it will reduce gain until a signal is detected. If a detected signal is too high in a frequency band, or if the Signal Booster detects an oscillation, the Signal Booster will automatically turn the power off on that band. For a detected oscillation the Signal Booster will automatically resume normal operation after a minimum of 1 minute. After 5 (five) such automatic restarts, any problematic bands are permanently shut off until the Signal Booster has been manually restarted by momentarily removing power from the Signal Booster. Noise power, gain, and linearity are maintained by the Signal Booster's microprocessor.

The Manufacturer's rated output power of this equipment is for single carrier operation. For situations when multiple carrier signals are present, the rating would have to be reduced by 3.5 dB, especially where the output signal is re-radiated and can cause interference to adjacent band users. This power reduction is to be by means of input power or gain reduction and not by an attenuator at the output of the device.

ASSEMBLED IN THE USA






Kit Variations




Note: Custom kits do not include antennas, lightning surge protectors, etc.

Custom kits only include the amplifier, a power cord, and the noted spool of cable.



SKU	460149 - STANDARD KIT	460249 - CUSTOM KIT	460549 - CUSTOM KIT
KIT CONTENTS	2' & 100' (qty: 2) sections of connectorized Wilson 400 cable	Power Supply w/250 ft. Wilson400 Cable	Power Supply w/500 ft. Plenum Cable
PKG 1 of 2 L/W/H/WEIGHT	27.5" / 18" / 6.5" / 44 lbs SHIPS IN ONE BOX	19" / 12" / 2.5" / 16.615 lbs	19" / 12" / 2.5" / 16.615 lbs
PKG 2 of 2 L/W/H/WEIGHT		15" / 15" / 6" / 16.60 lbs	36" / 36" / 19.75" / 140 lbs.
			



SKU	460150 - STANDARD KIT	460250 - CUSTOM KIT	460550 - CUSTOM KIT
KIT CONTENTS	2' & 100' (qty: 2) sections of connectorized Wilson 400 cable	Power Supply w/250 ft. Wilson400 Cable	Power Supply w/500 ft. SPSX Plenum Cable
PKG 1 of 2 L/W/H/WEIGHT	27.5" / 18" / 6.5" / 15.5 lbs SHIPS IN ONE BOX	17.5" / 12" / 3.75" / 9.760 lbs	17.5" / 12" / 3.75" / 9.760 lbs
PKG 2 of 2 L/W/H/WEIGHT		15" / 15" / 6" / 16.60 lbs	36" / 36" / 19.75" / 140 lbs
			

Support

FOR PARTNER'S USE

Cell Boosters Nova Scotia
429 Cobequid Rd, Lower Sackville, NS. B4C 4E6
Phone 902-932-3166
Email info@cellboosters-ns.ca
<https://enterprise.cellboosters-ns.ca>



3 Year Warranty from Purchase

Website: www.wilsonpro.com/support

Phone: +1 866 294 1660
Monday to Saturday