



429 COBEQUID RD, LOWER SACKVILLE, NS. B4C 4E6

EMAIL: [HTTPS://CELLBOOSTERS-NS.CA](https://cellboosters-ns.ca)

PHONE: 902.932.3166

ENTERPRISE AND BUSINESS CELL REPEATER SYSTEMS

ABOUT CELL BOOSTERS NOVA SCOTIA

Cell Boosters Nova Scotia is located in Lower Sackville, Nova Scotia. We are the Authorised Dealer/Installer for WilsonPro cell booster systems for this area. Our installations include multi-story buildings with multiple amplifiers and dozens of indoor antennas.

Cell Boosters Nova Scotia is one of 3 sister companies with common ownership with a combined 30+ years of experience and growth in technical service industries. **Capsplus** (<https://capsplus.ca>) serves province wide public services corporations as well as business

ranging from single owner/employee to large corporations with hundreds of employees. **Auto Light Atlantic** (<https://autolightatlantic.ca>) supplies and installs emergency equipment including advanced communications and lighting systems to fire, ambulance and police services.

We chose WilsonPro Enterprise cell booster systems because they are best in class, highly reliable, and can be remotely monitored. Enterprise systems are ideally suited for continuous use in demanding environments.

ABOUT WILSONPRO CELL REPEATER SYSTEMS

Wilson Electronics, located in the US, builds enterprise and commercial class cell booster systems. They employ one or more outside antennas, one or more signal amplifiers, and properly distributed indoor antennas to boost the

signal inside a building up to 26dBm uplink and 17dBm downlink. These systems work with all carriers and all devices, and automatically manage signal strength.

WHY BUILDINGS LOSE SIGNAL STRENGTH

The main causes of signal loss inside buildings are materials and objects that block and absorb cell radio transmissions, including:

- Building materials, especially in newer buildings
- Obstacles in the line of sight to the cell tower
- Interference from other signal

sources

Typical effects of low signal strength are

- Slow data speed
- Poor call quality
- Dropped calls

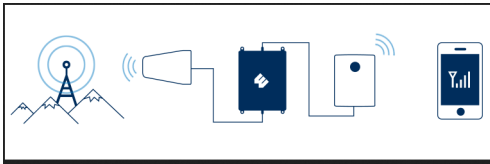
In locations with low signal strength outside the building, there may be no signal at all inside the building.

ABOUT CELL BOOSTERS / REPEATERS

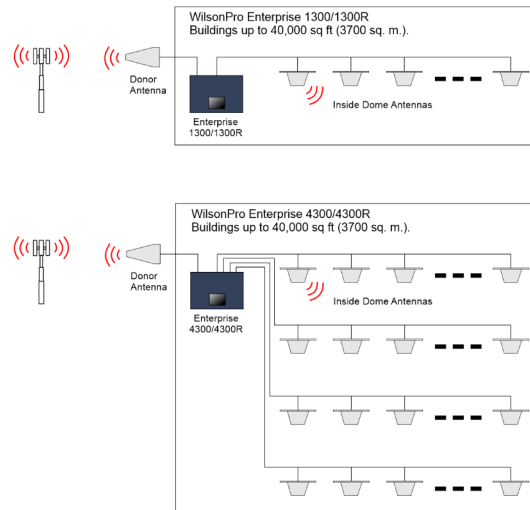
CELL BOOSTERS / REPEATERS

Cell boosters, also known as cell phone repeaters,

- will detect any existing signal in the area, amplify that detected signal, and then rebroadcast the boosted signal throughout the commercial property or building.
- help boost the signal to and from the cell towers in the area, creating a secure connection, broad coverage for the users, and a more reliable way to talk, text and use data when on commercial property.



multiple outdoor antennas and multiple indoor antennas and be deployed in very large and multistory buildings. They are suitable for challenging environments.



TYPES OF REPEATERS

Home and Home Office repeaters are smaller, lower in power, and suitable for spaces up to 3-4000 sq. Ft. They consist of an outside antenna, an amplifier, and one indoor antenna. An example is the WeBoost Home Multiroom.

Vehicle repeaters are similar to home systems but are 12 Volt systems designed for in-vehicle installation. The WeBoost Drive Reach RV is typical of this type.

Business and Office systems are designed for offices, retail space and warehouse space up to 8-12000 sq. Ft. The WeBoost Office 100 and Office 200 models can have up to 4 indoor antennas

Enterprise Systems like to WilsonPro 1300 and 4300 are designed to have

FEATURES TO LOOK FOR

5G Compatibility. Cell communications has evolved from 2G, 3G, 4G, and now 5G technology. 5G is revolutionizing communications. It operates on 3 radio frequency bands:

- Low-band 5G (Carrier-Aggregated). Delivers 5G performance through carrier aggregation and dynamic spectrum sharing.
- Mid-band 5G (C-Band). Balances the ultra-fast data rate of high frequency bands and the spatial coverage of low-band frequencies.
- High-band 5G (mmWave). Delivers the fastest data transmission but has a limited range.

A repeater needs to accommodate each as they become available.

HIGH UPLINK AND DOWNLINK POWER

This is the ability of the repeater to pull signals from cell towers and boost them on the downlink and also on the uplink back to the tower. Higher uplink and downlink power means improved call quality and data throughput.

CARRIER-AGNOSTIC COVERAGE AND RECEPTION

A repeater needs to accommodate signals from all carriers and all cellular devices. It needs to provide service to all users for all individuals.

LOW OVERLOAD AND SHUTDOWN THRESHOLD

Cell signals vary widely from different towers. A repeater needs to be able to accommodate the full range of signal strengths and qualities, handling high power signals from some sources and low power signals from others. It needs to

handle sudden bursts in signal strength without overloading and shutting down.

SOPHISTICATED SOFTWARE WITH INTELLIGENT SHUTDOWN MANAGEMENT

In cases where signal strength does exceed a specified limit, there are legal requirements for shutdown. In this case intelligent software can often manage the surge on that channel without shutting down. When it has to shut down, it can do so in a controlled fashion and restart to bring the system back online without intervention.

WILSONPRO REPEATERS HAVE IT ALL

WilsonPro designs and engineers cellular repeater systems for all kinds of environments and use cases. They are well acquainted with the technology of cellular networks, and understand the necessity for businesses to have access to a robust, reliable network.

GET STARTED BY GETTING A FREE SITE SURVEY AND QUOTE

Get in touch with us

- Email info@cellboosters-ns.ca
- Call 902.932.3166

We will take signal measurements inside and outside your building at a variety of points and create a map of the signal strength which we will plot on a drawing of the building. This will tell where there are issues and how severe they are.

Depending on the size of the building, we will submit the drawings and measurements to Wilson Electronics engineers, who will custom design a solution that will meet your needs.

For smaller buildings that require only a single amplifier from the Office 100/200 series or the Enterprise 1300, we may not need Wilson's design services.

[illegible]

Enterprise 1300

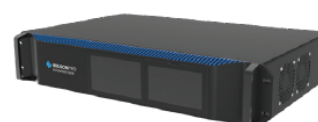
SKU: 460149F

FEATURES

- Three outdoor antenna ports to target multiple carrier towers.
- Wired or LTE WilsonPro Cloud access for remote functionality.
- Up to 26 dBm in uplink power and 17 dBm in downlink power.
- XDR technology to virtually eliminate shutdown or signal loss.
- 4.3-inch LCD touchscreen for an enhanced user-experience.
- Works with ALL phones and cellular devices on ALL carriers.



RACK MOUNT OPTION:



Enterprise 1300R
SKU: 460150F

Kit Includes



Enterprise 1300
or Enterprise 1300R
Booster



Outside
Directional Antenna
(314411)



Inside Dome
Antenna
(304412)



Lightning Surge
Protector
(859902)



2 ft. Wilson400
Cable
(952402)



100ft Low-Loss
Wilson400 Cable x2
(952300)

About

The WilsonPro **Enterprise 1300/1300R** is a commercial-grade, in-building cellular amplifier that represents the latest in cell signal boosting technology—including a revolutionary industry-first, three outdoor-antenna-port configuration. Depending on cell tower locations, using up to three outdoor antennas (each dedicated to a specific frequency band to collectively amplify signals from multiple towers) helps maximize coverage in commercial spaces up to 40,000 sq. ft.*

Based on user need or preference, the Enterprise 1300/1300R can also utilize “common mode” as a default; using only a single outdoor (donor) antenna and a single port to receive cell signal.

With wired or LTE access (using the built-in cellular modem) to the WilsonPro Cloud for remote functionality, the Enterprise 1300/1300R provides integrators and building managers with the capability to remotely manage, monitor, and adjust their amplifier, as well as receive real-time updates on a smartphone or tablet. Immediate notification of issues, such as system failure, oscillation, or change in signal strength is also provided via text or email.

The Enterprise 1300/1300R generates up to 26 dBm in uplink power—enabling it to reach towers at much greater distances. With up to 17 dBm in downlink power, it's also one of the most powerful amplifiers in its price range. The “R” model name signifies its rack-mount option.

This amplifier includes a 3-year manufacturer's warranty and a 30-day money-back guarantee.

*Depending on outside signal conditions.

Specifications

MODEL NUMBER	460149F • 460150F	
FREQUENCIES	Band 12/17	700 MHz
	Band 13	700 MHz
	Band 5	850 MHz
	Band 4	1700/2100 MHz
	Band 25	1900 MHz
MAX GAIN	70 dB	
IMPEDANCE	50 Ohm	
POWER	110 - 240 V AC, 50 - 60 Hz, 30 W	
CONNECTORS	N-Female	
BOOSTER DIMENSIONS	19 x 12 x 2.5 • 17.5 x 12 x 3.75 in	
BOOSTER WEIGHT	16.515 lbs • 9.66 lbs	

Detailed Specifications

	1300 / 1300R				
SKU	460149 / 460150				
Model Number	460149 / 460150				
FCC ID	PWO460049 / PWO460049 / PWO460050 / PWO460050				
Connectors	N-Connectors				
Antenna Impedance	50 Ohms				
Frequency	698-716 MHz, 729-746 MHz, 777-787 MHz, 824-894 MHz, 1850-1990 MHz, 1710-1755/2110-2155 MHz				
Power output for single cell phone (Uplink) dBm	700MHz Band12/17	700MHz Band13	800MHz	1700MHz	1900MHz
	23.9	23.9	25.1	23.7	26.7
Power output for single cell phone (Downlink) dBm	700MHz Band12/17	700MHz Band13	800MHz	2100MHz	1900MHz
	16.7	16.8	16.9	16.8	16.8
Noise Figure	5 dB nominal				
Isolation	> 90 dB				
Power Requirements	120V AC 0.5A				

Each Signal Booster is individually tested and factory set to ensure FCC compliance. The Signal Booster cannot be adjusted without factory reprogramming or disabling the hardware. The Signal Booster will amplify, but not alter incoming and outgoing signals in order to increase coverage of authorized frequency bands only. If the Signal Booster is not in use for five minutes, it will reduce gain until a signal is detected. If a detected signal is too high in a frequency band, or if the Signal Booster detects an oscillation, the Signal Booster will automatically turn the power off on that band. For a detected oscillation the Signal Booster will automatically resume normal operation after a minimum of 1 minute. After 5 (five) such automatic restarts, any problematic bands are permanently shut off until the Signal Booster has been manually restarted by momentarily removing power from the Signal Booster. Noise power, gain, and linearity are maintained by the Signal Booster's microprocessor.

The Manufacturer's rated output power of this equipment is for single carrier operation. For situations when multiple carrier signals are present, the rating would have to be reduced by 3.5 dB, especially where the output signal is re-radiated and can cause interference to adjacent band users. This power reduction is to be by means of input power or gain reduction and not by an attenuator at the output of the device.

ASSEMBLED IN THE USA



Kit Variations

Note: Custom kits do not include antennas, lightning surge protectors, etc. Custom kits only include the amplifier, a power cord, and the noted spool of cable.

 ENTERPRISE 1300	SKU	460149 - STANDARD KIT	460249 - CUSTOM KIT	460549 - CUSTOM KIT
	KIT CONTENTS	2' & 100' (qty: 2) sections of connectorized Wilson 400 cable	Power Supply w/250 ft. Wilson400 Cable	Power Supply w/500 ft. Plenum Cable
	PKG 1 of 2 L/W/H/WEIGHT	27.5" / 18" / 6.5" / 44 lbs	19" / 12" / 2.5" / 16.615 lbs	19" / 12" / 2.5" / 16.615 lbs
	PKG 2 of 2 L/W/H/WEIGHT	SHIPS IN ONE BOX	15" / 15" / 6" / 16.60 lbs	36" / 36" / 19.75" / 140 lbs.
 ENTERPRISE 1300R	SKU	460150 - STANDARD KIT	460250 - CUSTOM KIT	460550 - CUSTOM KIT
	KIT CONTENTS	2' & 100' (qty: 2) sections of connectorized Wilson 400 cable	Power Supply w/250 ft. Wilson400 Cable	Power Supply w/500 ft. SPSX Plenum Cable
	PKG 1 of 2 L/W/H/WEIGHT	27.5" / 18" / 6.5" / 15.5 lbs	17.5" / 12" / 3.75" / 9.760 lbs	17.5" / 12" / 3.75" / 9.760 lbs
	PKG 2 of 2 L/W/H/WEIGHT	SHIPS IN ONE BOX	15" / 15" / 6" / 16.60 lbs	36" / 36" / 19.75" / 140 lbs
				
		8 11815 02986 1	8 10005 96103 5	8 10005 96267 4
				
		8 11815 02987 8	8 10005 96106 6	8 10005 96268 1

Support

FOR PARTNER'S USE

Cell Boosters Nova Scotia
429 Cobequid Rd, Lower Sackville, NS. B4C 4E6
Phone 902-932-3166
Email info@cellboosters-nb.ca
<https://enterprise.cellboosters-nb.ca>



3 Year Warranty from Purchase

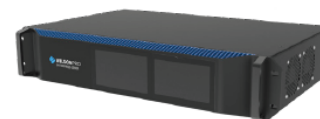
460149-460150_1300R+1300_SS_US_111621

Enterprise 4300

SKU: 460152

FEATURES

- Three outdoor antenna ports to target multiple carrier towers.
- Four independently controlled indoor antenna ports built in.
- Wired or LTE WilsonPro Cloud access for remote functionality.
- Network Scanning for real-time measurements of cell signal.
- Up to 26 dBm in uplink power.
- 17 dBm in downlink power per port.
- XDR technology to virtually eliminate shutdown or signal loss.
- 4.3-inch LCD touchscreen for an enhanced user-experience.
- Works with ALL phones and cellular devices on ALL carriers.



RACK MOUNT OPTION:
Enterprise 4300R

Standard Kit Includes



Enterprise 4300
or Enterprise 4300R
Amplifier



Outside
Directional Antenna
(314411)



Inside Dome
Antenna x4
(304412)



Lightning Surge
Protector
(859902)



2 ft. Wilson400
Cable
(952402)



100ft Low-Loss
Wilson400 Cable x5
(952300)

About

The WilsonPro **Enterprise 4300/4300R** is a commercial-grade, in-building cellular amplifier that represents the latest in cell signal boosting technology—including a revolutionary industry-first, three outdoor-antenna-port configuration. Depending on cell tower locations, using up to three outdoor antennas (each dedicated to a specific frequency band to collectively amplify signals from multiple towers) helps maximize coverage in commercial spaces up to 100,000 sq.ft.*

Based on user need or preference, the Enterprise 4300/4300R can also utilize “common mode” as a default; using only a single outdoor (donor) antenna and a single port to receive cell signal.

With wired or LTE access (using the built-in cellular modem) to the WilsonPro Cloud for remote functionality, the Enterprise 4300/4300R provides integrators and building managers with the capability to remotely manage, monitor, and adjust their amplifier, as well as receive real-time measurements of cell signal power, bands, frequency, and quality through network scanning. Immediate notification of issues, such as system failure, oscillation, or change in signal strength is also provided via text or email.

The Enterprise 4300/4300R generates up to 26 dBm in uplink power—enabling it to reach towers at much greater distances. With up to 17 dBm in downlink power per port, it's also one of the most powerful amplifiers in its price range. With all four indoor-antenna ports equipped with up to 17 dBm downlink power of their own, each of the Enterprise 4300/4300R's four indoor antennas can effectively broadcast signal. The “R” model name signifies its rack-mount option.

This amplifier includes a 3-year manufacturer's warranty and a 30-day money-back guarantee.

*Depending on outside signal conditions.

Specifications

SKU	460152* • 460252* • 460652* 460153* • 460253* • 460653*	
FREQUENCIES	Band 12/17	700 MHz
	Band 13	700 MHz
	Band 5	850 MHz
	Band 4	1700/2100 MHz
	Band 25	1900 MHz
MAX GAIN	70 dB	
MAX UPLINK POWER	26 dBm	
MAX DOWNLINK POWER	17 dBm	
IMPEDANCE	50 Ohm	
POWER	120 V AC, 60 Hz, 60 W	
CONNECTORS	N-Female	
AMPLIFIER DIMENSIONS	19 x 12 x 2.5 • 17.5 x 12 x 3.75 in	
AMPLIFIER WEIGHT	16.930 lbs • 9.860 lbs	

⚠ WARNING: Cancer and Reproductive Harm - www.P65Warnings.ca.gov.

Detailed Specifications

	4300 / 4300R				
SKU	460152 / 460153				
Model Number	460052 / 460053				
FCC ID	PWO460052 / PWO460053				
IC ID	4726A-460052 / 4726A-460053				
Connectors	N-Connectors				
Antenna Impedance	50 Ohms				
Frequency	698-716 MHz, 729-746 MHz, 777-787 MHz, 824-894 MHz, 1850-1990 MHz, 1710-1755/2110-2155 MHz				
Power output for single cell phone (Uplink) dBm	700MHz Band12/17	700MHz Band13	800MHz	1700MHz	1900MHz
	22.9	23.1	24.6	22.8	25.5
Power output for single cell phone (Downlink) dBm	700MHz Band12/17	700MHz Band13	800MHz	2100MHz	1900MHz
	16.9	16.7	16.8	16.6	16.6
Noise Figure	5 dB nominal				
Isolation	> 90 dB				
Power Requirements	120V AC 0.5A				

Each Signal Booster is individually tested and factory set to ensure FCC compliance. The Signal Booster cannot be adjusted without factory reprogramming or disabling the hardware. The Signal Booster will amplify, but not alter incoming and outgoing signals in order to increase coverage of authorized frequency bands only. If the Signal Booster is not in use for five minutes, it will reduce gain until a signal is detected. If a detected signal is too high in a frequency band, or if the Signal Booster detects an oscillation, the Signal Booster will automatically turn the power off on that band. For a detected oscillation the Signal Booster will automatically resume normal operation after a minimum of 1 minute. After 5 (five) such automatic restarts, any problematic bands are permanently shut off until the Signal Booster has been manually restarted by momentarily removing power from the Signal Booster. Noise power, gain, and linearity are maintained by the Signal Booster's microprocessor.

The Manufacturer's rated output power of this equipment is for single carrier operation. For situations when multiple carrier signals are present, the rating would have to be reduced by 3.5 dB, especially where the output signal is re-radiated and can cause interference to adjacent band users. This power reduction is to be by means of input power or gain reduction and not by an attenuator at the output of the device.

ASSEMBLED IN THE USA



Kit Variations

Note: Custom kits do not include antennas, lightning surge protectors, etc. Custom kits only include the amplifier, a power cord, and the noted spool of cable.

 ENTERPRISE 4300	SKU	460152 - STANDARD KIT	460252 - CUSTOM KIT	460652 - CUSTOM KIT
	KIT CONTENTS	2' & 100' (qty: 5) sections of connectorized Willson400 cable	500' Willson400 Spool	1500' ½" Plenum (3 spools, 500' each)
	PKG 1 of 2 L/W/H/WEIGHT	28" / 19" / 21" / 65.06 lbs SHIPS IN ONE BOX	19" / 12" / 2.5" / 21.75 lbs	19" / 12" / 2.5" / 21.75 lbs
	PKG 2 of 2 L/W/H/WEIGHT		14.5" / 15.5" / 9" / 36.86 lbs	14.25" / 14.25" / 13" / 53 lbs
				
 ENTERPRISE 4300R	SKU	460153 - STANDARD KIT	460253 - CUSTOM KIT	460653 - CUSTOM KIT
	KIT CONTENTS	2' & 100' (qty: 5) sections of connectorized Willson400 cable	500' Willson400 Spool	1500' ½" Plenum (3 spools, 500' each)
	PKG 1 of 2 L/W/H/WEIGHT	28.75 / 19 / 20.5 / 57.6 lbs SHIPS IN ONE BOX	17.5" / 12" / 3.75" / 15.3 lbs	17.5" / 12" / 3.75" / 15.3 lbs
	PKG 2 of 2 L/W/H/WEIGHT		14.5" / 15.5" / 9" / 36.86 lbs	14.25" / 14.25" / 13" / 53 lbs
				

Support

FOR PARTNER'S USE

Cell Boosters Nova Scotia
 429 Cobequid Rd, Lower Sackville, NS. B4C 4E6
 Phone 902-932-3166
 Email info@cellboosters-nb.ca
<https://enterprise.cellboosters-nb.ca>
<https://enterprise.cellboosters-nb.ca>



3 Year Warranty from Purchase

460152-460153_4300-4300R SS_US_112221

Office 100

SKU: 50 Ohm: 652060 **MSRP:** \$1,649.99
75 Ohm: 653060

FEATURES

- Ideal amplifier system for small businesses and warehouses
- Covers 8,000 to 25,000 square feet
- Includes LED indicators
- Is ISED approved and works on all Canadian carriers, including Rogers, Telus, Bell, and more



Kit Includes

652060 50 Ohm Kit	Office 100 Amplifier	Omni Plus Antenna 314422	Inside Dome Antenna 304412	Lightning Surge Protector 859902	2ft Low-Loss Wilson400 Cable 952302	60ft Low-Loss Wilson400 Cable 952360	75ft Low-Loss Wilson400 Cable 952375
653060 75 Ohm Kit	Office 100 Amplifier	Omni Plus Antenna 314423	Inside Dome Antenna 304419	Lightning Surge Protector 859902	2ft Low-Loss RG11 Cable 951127	60ft Low-Loss RG11 Cable 951160	75ft Low-Loss RG11 Cable 951175

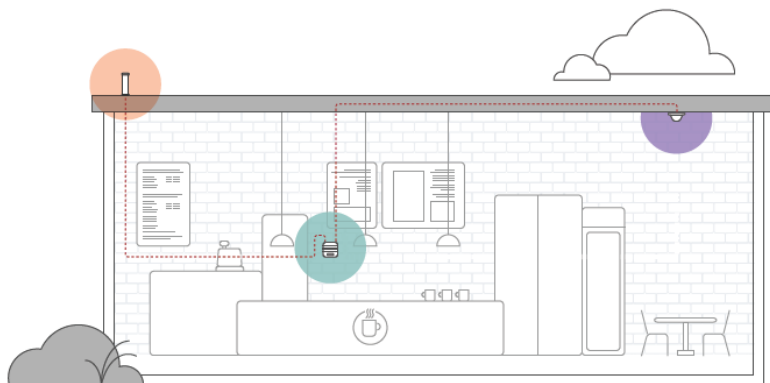
About

weBoost **Office 100** is an ideal amplifier solution for small businesses and warehouses up to 25,000 square feet. With Office 100, anyone who walks into the business will enjoy fewer dropped calls, uninterrupted texts, better voice quality, improved hotspot capability, faster internet speeds, better streaming, and more. All components needed for do-it-yourself installation are included. Office 100 is 5G compatible and improves cell signal on all Canadian carriers, including Rogers, Telus, Bell, and more. Office 100 comes with an industry-leading 3-year manufacturer's warranty and a 30-day money-back guarantee.

Specifications

SKU NUMBER	652060 / 653060	
FREQUENCIES	Band 12/17	700 MHz
	Band 13	700 MHz
	Band 5	850 MHz
	Band 4	1700/2100 MHz
	Band 25/2	1900 MHz
MAX GAIN	72 dB	
MAX UPLINK POWER	24 dBm	
MAX DOWNLINK POWER	12 dBm	
IMPEDANCE	50 Ohm / 75 Ohm	
POWER	110-240V AC, 50-60 Hz, 20 W	
CONNECTORS	N-Female / F-Female	
BOOSTER DIMENSIONS	6 x 6 x 1.8 in	
BOOSTER WEIGHT	1.9 lbs	

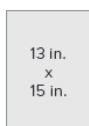
How It Works



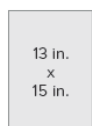
- 1 Outside antenna:** The outside antenna communicates back and forth with nearby cell towers.
- 2 Booster:** The booster amplifies any cell signals it receives from the outside antenna.
- 3 Inside antenna:** The inside antenna broadcasts these signals for use throughout your business.

Package Dimensions

13 L x 13 W x 15 H



FRONT



SIDE



TOP/BOTTOM



WEIGHT

MASTER CARTON: 13 L x 13 W x 15 H | 16 Lbs. | Qty 1

FOR PARTNER'S USE

Cell Boosters Nova Scotia
429 Cobequid Rd, Lower Sackville, NS. B4C 4E6
Phone 902-932-3166
Email info@cellboosters-nb.ca
<https://enterprise.cellboosters-nb.ca>
<https://enterprise.cellboosters-nb.ca>

652060 • 653060_Office100_SS_062821

Support



3-Year Warranty from Purchase.

ASSEMBLED IN THE USA



Innovation, Science and
Economic Development Canada

UPC

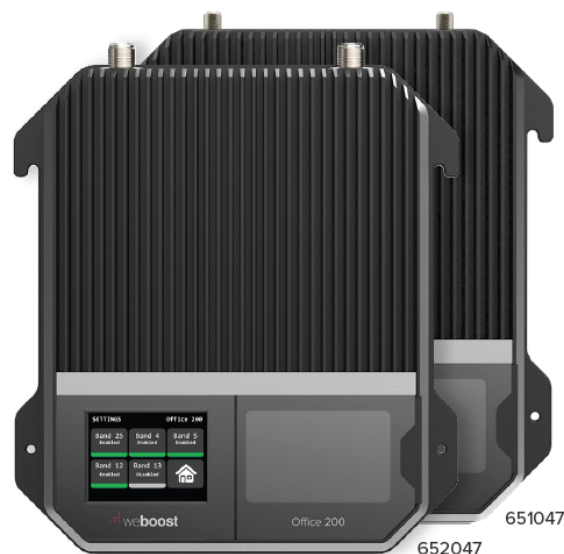


Office 200

SKU: 50 Ohm: 652047 **MSRP:** \$2,199.99
75 Ohm: 651047

FEATURES

- Ideal amplifier system for small-to-medium businesses
- Covers 12,000 to 35,000 square feet
- Comes with LCD touch screen for increased usability
- Allows manual control of frequency bands
- Is ISED approved and works on all Canadian carriers, including Rogers, Telus, Bell, and more



Kit Includes

652047 50 Ohm Kit	Office 200 Amplifier	Omni Plus Antenna 314422	Low Profile Dome Antenna 314407	Lightning Surge Protector 859902	2ft Low-Loss Wilson400 Cable 952302	60ft Low-Loss Wilson400 Cable 952360	75ft Low-Loss Wilson400 Cable 952375
651047 75 Ohm Kit	Office 200 Amplifier	Omni Plus Antenna 314423	Low Profile Dome Antenna 314407	Lightning Surge Protector 859992	2ft Low-Loss RG11 Cable 951127	60ft Low-Loss RG11 Cable 951160	75ft Low-Loss RG11 Cable 951175

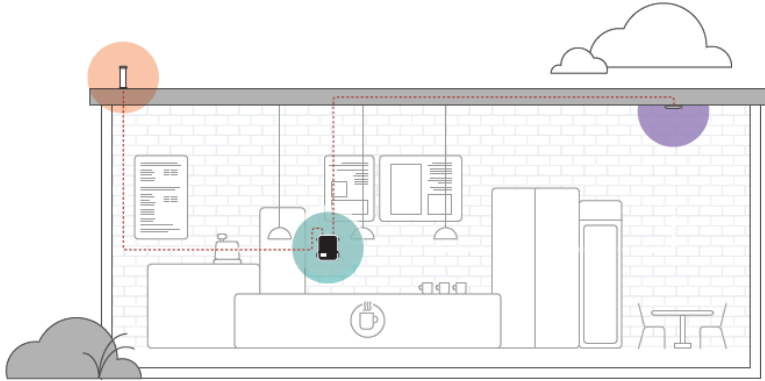
About

weBoost **Office 200** is perfect for small to medium-sized businesses and warehouses looking for a high-performance amplifier solution to improve cell signal in a commercial space. Office 200 comes with a color LCD touch screen, allowing users to troubleshoot, assess performance, adjust the outside antenna, and turn bands on and off. All components needed for do-it-yourself installation are included. Office 200 is 5G compatible and improves cell signal on all Canadian carriers, including Rogers, Telus, Bell, and others. Office 200 comes with an industry-leading 3-year manufacturer's warranty and a 30-day money-back guarantee.

Specifications

SKU NUMBER	652047 / 651047	
FREQUENCIES	Band 12/17	700 MHz
	Band 13	700 MHz
	Band 5	850 MHz
	Band 4	1700/2100 MHz
	Band 25/2	1900 MHz
MAX GAIN	72 dB	
IMPEDANCE	50 Ohm / 75 Ohm	
POWER	110-240V AC, 50-60 Hz, 20 W	
CONNECTORS	N-Female / F-Female	
BOOSTER DIMENSIONS	14.25 x 10.75 x 2.25 in	
BOOSTER WEIGHT	7.7 lbs	

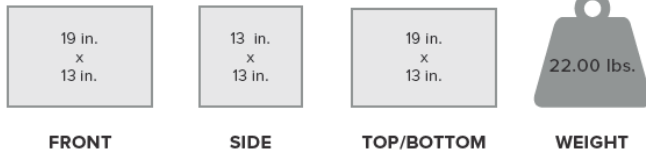
How It Works



- 1 **Outside antenna:** The outside antenna communicates back and forth with nearby cell towers.
- 2 **Booster:** The booster amplifies any cell signals it receives from the outside antenna.
- 3 **Inside antenna:** The inside antenna broadcasts these signals for use throughout your business.

Package Dimensions

19 L x 13 W x 13 H



MASTER CARTON: 19 L x 13 W x 13 H | 22 Lbs. | Qty 1

Support



3-Year Warranty from Purchase.

FOR PARTNER'S USE

Cell Boosters Nova Scotia
429 Cobequid Rd, Lower Sackville, NS. B4C 4E6
Phone 902-932-3166
Email info@cellboosters-nb.ca
<https://enterprise.cellboosters-nb.ca>
<https://enterprise.cellboosters-nb.ca>

ASSEMBLED IN THE USA



Innovation, Science and
Economic Development Canada

UPC



652047 • 651047_Office 200_SS_062821